

**HIOSSSEN**  
IMPLANT

# PREPARE FOR THE FUTURE TODAY.

## BE DIGITALLY READY WITH 3SHAPE INTRAORAL SCANNERS



### TRIOS 3

- Scan-and-send or offer chairside services
- Show patients 3D scans of their dentition
- Engage patients and gain treatment acceptance

### TRIOS 4

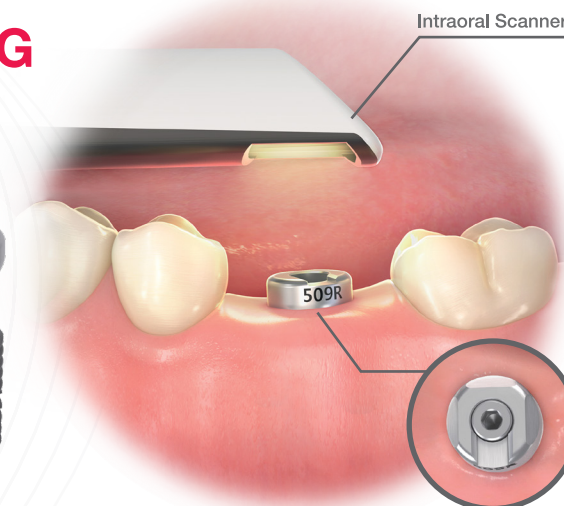
- Scan-and-send or offer chairside services
- Show patients 3D scans of their dentition
- Engage patients and gain treatment acceptance
- Available wired or wireless
- Early surface caries detection

### TRIOS 5

- Ergonomically designed, 30% smaller and 20% lighter
- Reduced cross-contamination, the new standard in infection control
- Calibration free scanning technology
- LED ring for better user guidance
- Long lasting battery

3shape 

## SCAN HEALING ABUTMENT



### Why use this innovative healing abutment?

- Combines both healing abutment and scan body function
- Scan the healing abutment directly, without the use of copings and additional radiographs
- Less healing abutment removal = less risk of implant and soft tissue trauma
- Compatible for traditional PVS impression taking, simply take an impression of the healing abutment treatment acceptance

## PARTNER LAB